

Occupational and Environmental Medicine

Adopted as the Journal of the Faculty of Occupational Medicine of the Royal College of Physicians of London

Editor

Anne Cockcroft

Deputy editor

T C Aw

Associate editors

Craig Jackson
David Koh
Mark Nieuwenhuijsen
Harry Roels
Malcolm Sim
Peter Westerholm
Otto Wong

Book review editor

R L Maynard

Commissioning editor

I Kennedy

Technical editor

Margaret James

Editorial assistant

Kathryn Walsh

Editorial board

F J H van Dijk (Holland)	T Okubo (Japan)
M Eglite (Latvia)	H Roels (Belgium)
J Harrison (United Kingdom)	M Sim (Australia)
D Koh (Singapore)	D C Snashall (United Kingdom)
G Liss (Canada)	J-D Wang (Taiwan)
R McNamee (United Kingdom)	P Westerholm (Sweden)
J Myers (South Africa)	Otto Wong (USA)
M J Nieuwenhuijsen (United Kingdom)	Editor, <i>British Medical Journal</i>

Instructions to authors

Full instructions are available online at www.occenvmed.com. Authors are required to grant *Occupational and Environmental Medicine* an exclusive licence to publish; further details available online at www.occenvmed.com/misc/ffora.shtml. If you do not have web access please contact the editorial office:

Occupational and Environmental Medicine
BMA House
Tavistock Square
London WC1 9JR, UK
Telephone: +44 (0) 20 7383 6561
Fax: +44 (0) 20 7383 6668
Email: omeditorial@bmjgroup.com

Subscription information

Occupational and Environmental Medicine is published monthly
ISSN 1351-0711 (print); 1470-7926 (online)

Institutional rates

Print – 2004 rates: £252; €403; US\$403
Online – Site licences are priced on FTE basis and allow access by the whole institution. Print is available at deeply discounted rates for online subscribers; details available online at www.bmjournals.com/subscriptions or contact the Subscription Manager in London (see below)

Personal rates

Print (includes online access) – £142; €227; US\$227
Online only – £68; €109; US\$109

How to subscribe

See inside back cover



www.publicationethics.org.uk

This journal is a member of and subscribes to the principles of the Committee on Publication Ethics

Copyright

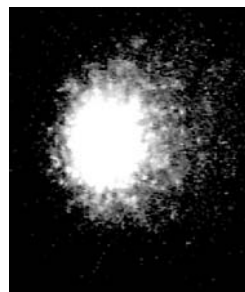
© 2003 BMJ Publishing Group. All rights reserved; no part of this publication may be reproduced, stored in a retrieval system, or transmitted in any form or by any means, electronic, mechanical, photocopying, recording, or otherwise without the prior permission of BMJ Publishing Group.

• Occupational and Environmental Medicine is published by BMJ Publishing Group, typeset by The Charlesworth Group, and printed in UK on acid free paper by Thanet Press Limited, Margate, Kent, UK

• Periodicals postage paid, Rahway, NJ. Postmaster: send address changes to: *Occupational and Environmental Medicine*, c/o Mercury Airfreight International Ltd, 365 Blair Road, Avenel, NJ 07001, USA



Vibration white finger (Health and Safety Laboratory); Cashmere factory, Mongolia (Mark Henley/Panos Pictures); Forest fires (NASA)



See p 910

See p 969

**NEW
ONLINE
SUBMISSION
GO TO
WEBSITE
TO SUBMIT YOUR
MANUSCRIPT**

contents OEM

Volume 60 Number 12 December 2003

Editorial

- 899 Workplace counselling *M Henderson, M Hotopf, S Wessely*

Original articles

- 901 Parental occupation at periconception: findings from the United Kingdom Childhood Cancer Study *P A McKinney, N T Fear, D Stockton, on behalf of the UK Childhood Cancer Study Investigators*
- 910 Urine mutagenicity and lymphocyte DNA damage in fruit growers occupationally exposed to the fungicide captan *P Lebailly, A Devaux, D Pottier, M De Meo, V Andre, I Baldi, F Severin, J Bernaud, B Durand, M Henry-Amar, P Gauduchon*
- 918 Mortality and cancer morbidity in a cohort of Canadian petroleum workers *R J Lewis, A R Schnatter, I Drummond, N Murray, F S Thompson, A M Katz, G Jorgensen, M J Nicolich, D Dahlman, G Thériault*
- 929 Prevalence of respiratory symptoms among female flight attendants and teachers *E A Whelan, C C Lawson, B Grajewski, M R Petersen, L E Pinkerton, E M Ward, T M Schnorr*
- 935 Respiratory symptoms and cotton dust exposure: results of a 15 year follow up observation *X-R Wang, E A Eisen, H-X Zhang, B-X Sun, H-L Dai, L-D Pan, D H Wegman, S A Olenchok, D C Christiani*
- 942 Effects of measurement strategy and statistical analysis on dose-response relations between physical workload and low back pain *J P Jansen, A Burdorf*
- 948 From insecure to secure employment: changes in work, health, health related behaviours, and sickness absence *M Virtanen, M Kivimäki, M Elovainio, J Vahtera, J E Ferrie*
- 954 Occupational contact dermatitis to nickel: experience of the British dermatologists (EPIDERM) and occupational physicians (OPRA) surveillance schemes *K W Shum, J D Meyer, Y Chen, N Cherry, D J Gawkrödger*
- 958 Occupational exposure of midwives to nitrous oxide on delivery suites *K A Henderson, I P Matthews, A Adisesh, A D Hutchings*
- 962 Skin temperature recovery from cold provocation in workers exposed to vibration: a longitudinal study *M Cherniack, A Brammer, J Meyer, T Morse, D Peterson, R Fu*
- 969 Benzene and naphthalene in air and breath as indicators of exposure to jet fuel *P P Egeghy, L Hauf-Cabalo, R Gibson, S M Rappaport*
- 977 Investigating the dose-response relation between air pollution and total mortality in the APHEA-2 multicity project *E Samoli, G Touloumi, A Zanobetti, A Le Tertre, Chr Schindler, R Atkinson, J Vonk, G Rossi, M Saez, D Rabcsenko, J Schwartz, K Katsouyanni*

.....
Short reports

- 983 Increased occupational physical activity does not improve physical fitness *L Ruzic, S Heimer, M Misigoj-Durakovic, B R Matkovic*
- 986 Potential effects on human health of an ammonia rich atmospheric environment in an archaeologically important cave in southeast Asia *F B Pyatt*

.....
Miscellanea

- 934 World at work: A new series
A Cockroft
- 968 Echo: Secondhand smoke exposure remains a risk in Massachusetts restaurants

despite widespread adoption of smoking regulations

- 985 Echo: Lumbar disc degeneration is more common in Olympic athletes than in the normal population
- 989 World at work: Hazards and controls in aluminium potrooms *M Sim, G Benke*
- 992 Echo: Hip pain and work or leisure activity

.....
Electronic pages

- e17 The amount of sleep obtained by locomotive engineers: effects of break duration and time of break onset
G D Roach, K J Reid, D Dawson
- e18 Under-ascertainment of multiple myeloma among participants in UK atmospheric atomic and nuclear weapons tests *S R Roff*



See p 989

Electronic pages

In order to facilitate more rapid publication, authors are now being offered the option for their paper to be published online only. These papers are published in the first available issue after acceptance and are listed on the

contents page of the printed journal under the heading "Electronic pages". The papers may be viewed via the OEM website (www.occenvmed.com).