

# Occupational and Environmental Medicine

Adopted as the Journal of the Faculty of Occupational Medicine of the Royal College of Physicians of London

## Editor

Anne Cockcroft

## Deputy editor

T C Aw

## Book review editor

R L Maynard

## Commissioning editor

I Kennedy

## Technical editors

Margaret James

John Weller

## Editorial assistant

Kathryn Walsh

## Editorial board

F J H van Dijk (Holland)

M Eglite (Latvia)

J Harrison (United Kingdom)

D Koh (Singapore)

G Liss (Canada)

R McNamee (United Kingdom)

J Myers (South Africa)

B Nemery (Belgium)

M J Nieuwenhuijsen (United Kingdom)

T Okubo (Japan)

H Roels (Belgium)

M Sim (Australia)

D C Snashall (United Kingdom)

J-D Wang (Taiwan)

P Westerholm (Sweden)

Otto Wong (USA)

Editor, *British Medical Journal*

## Instructions to authors

Full instructions are available online at [www.occenvmed.com](http://www.occenvmed.com). Authors are required to grant *Occupational and Environmental Medicine* an exclusive licence to publish; further details available online at [www.occenvmed.com/misc/ifora.shtml](http://www.occenvmed.com/misc/ifora.shtml)

If you do not have web access please contact the editorial office:

*Occupational and Environmental Medicine*

BMA House

Tavistock Square

London WC1H 9JR, UK

Telephone: +44 (0) 20 7383 6561

Fax: +44 (0) 20 7383 6668

Email: [oemeditorial@bmjgroup.com](mailto:oemeditorial@bmjgroup.com)

## Subscription information

*Occupational and Environmental Medicine* is published monthly  
ISSN 1351-0711 (print); 1470-7926 (online)

## Institutional rates

Print – 2002 rates: £218; US\$350

Online – Site licences are priced on FTE basis and allow access by the whole institution. Print is available at deeply discounted rates for online subscribers; details available online at [www.bmjournals.com/subscriptions](http://www.bmjournals.com/subscriptions) or contact the Subscription Manager in London (see below)

## Personal rates

Print (includes online access) – £129; US\$206

Online only – £65; US\$99

## How to subscribe

See inside back cover



[www.publicationethics.org.uk](http://www.publicationethics.org.uk)

This journal is a member of and subscribes to the principles of the Committee on Publication Ethics

## Copyright

© 2002 *Occupational and Environmental Medicine*. All rights reserved; no part of this publication may be reproduced, stored in a retrieval system, or transmitted in any form or by any means, electronic, mechanical, photocopying, recording, or otherwise without the prior permission of *Occupational and Environmental Medicine*.

- Occupational and Environmental Medicine is published by BMJ Publishing Group and printed in UK on acid free paper by Thanet Press Limited, Margate, Kent, UK
- Periodicals postage paid, Rahway, NJ. Postmaster: send address changes to: *Occupational and Environmental Medicine*, c/o Mercury Airfreight International Ltd, 365 Blair Road, Avenel, NJ 07001, USA

# contents OEM

Volume 59 Number 7 July 2002



## Editorials

425 Criteria for the diagnosis of peripheral neuropathies *S H Horowitz*

427 A new series for OEM *T-C Aw*

## Review

428 Cosmic rays: are air crew at risk? *M K Lim*

## Original articles

434 A clinical neurological, neurophysiological, and neuropsychological study of sheep farmers and dippers exposed to organophosphate pesticides *G A Jamal, S Hansen, A Pilkington, D Buchanan, R A Gillham, M Abdel-Azis, P O O Julu, S F Al-Rawas, F Hurley, J P Ballantyne*

442 Clinical validation of methods of diagnosis of neuropathy in a field study of United Kingdom sheep dippers *D Buchanan, G A Jamal, A Pilkington, S Hansen*

447 Overtime work, insufficient sleep, and risk of non-fatal acute myocardial infarction in Japanese men *Y Liu, H Tanaka, The Fukuoka Heart Study Group*

452 Active epidemiological surveillance of musculoskeletal disorders in a shoe factory *Y Roquelaure, J Mariel, S Fanello, J-C Boissière, H Chiron, C Dano, D Bureau, D Penneau-Fontbonne*

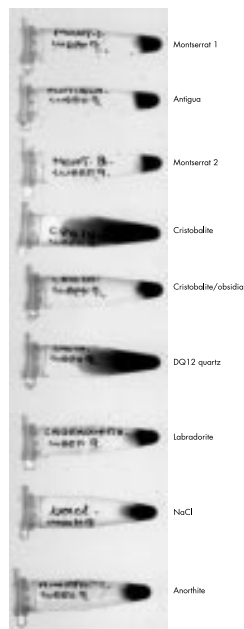
459 Comparison of two different approaches for the analysis of data from a prospective cohort study: an application to work related risk factors for low back pain *W E Hoogendoorn, P M Bongers, H C W de Vet, J W R Twisk, W van Mechelen, L M Bouter*

466 Pulmonary epithelial response in the rat lung to instilled Montserrat respirable dusts and their major mineral components *D G Housley, K A Bérubé, T P Jones, S Anderson, F D Pooley, R J Richards*

473 Cancer mortality among man-made graphite electrode manufacturing workers: results of a 38 year follow up *I Mori*

481 Cancer incidence and magnetic field exposure in industries using resistance welding in Sweden *N Håkansson, B Floderus, P Gustavsson, C Johansen, J H Olsen*

487 The prevalence of occupational dermatitis in the UK printing industry *E J Livesley, L Rushton, J S English, H C Williams*



See p 466

**NEW  
ONLINE  
SUBMISSION  
GO TO  
WEBSITE  
TO SUBMIT YOUR  
MANUSCRIPT**

## PostScript

- 494 Mortality from cardiovascular diseases and exposure to inorganic mercury  
*B Sjögren J Holme, B Hilt*
- 494 Joint action of smoking and asbestos exposure on lung cancer  
*F D K Liddell, P Lee*
- 496 Occupational exposure to magnetic fields  
*M Kundi, T Sorahan, J M Harrington*
- 496 Book review

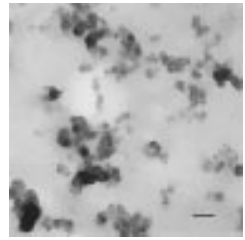
497 Corrections

## Miscellanea

- 472 Echo: Sizing up the evidence
- 493 Letter from Pakistan
- 493 Echo: Stepping off the treadmill

## Education

- 498 Baker's asthma  
*J Brisman*



See p 472



See p 493

Find out what's in the latest issue  
the moment it's published

Email Alerts

Sign up to receive the table of contents by email every month. You can select from three alerts: Table of Contents (full), TOC Awareness (notice only); *Occupational and Environmental Medicine* related announcements.

[www.occenvmed.com](http://www.occenvmed.com)

[www.occenvmed.com](http://www.occenvmed.com)